

MOBIELE TORENKRANEN MOBILE TOWER CRANES

8 t

MK 88-4.1



Gieklengte
Mast length
45m




Ballast
Counterweight
11,3t



Stempelbasis
Outriggers
7,3x7m

Electrical power connection / Stroomaansluiting

		RCD	U	f	P
CEE 63 A	131 m - 5 x 16 mm ²	Typ B / 300 mA	400 V	50 Hz	45 kVA

This crane is 'plug in Electric' and can optionally run electrically.

The crane is powered by a Diesel engine as standard.

Deze kraan is optioneel 'plug in elektrisch'.

Standaard zal de kraan aangedreven worden door een Diesel generator in de bovenwagen.

De informatie binnen dit document is enkel voor richtlijnen en kan onderhevig zijn aan veranderingen.

© M.J. van Riel. Alle rechten voorbehouden.

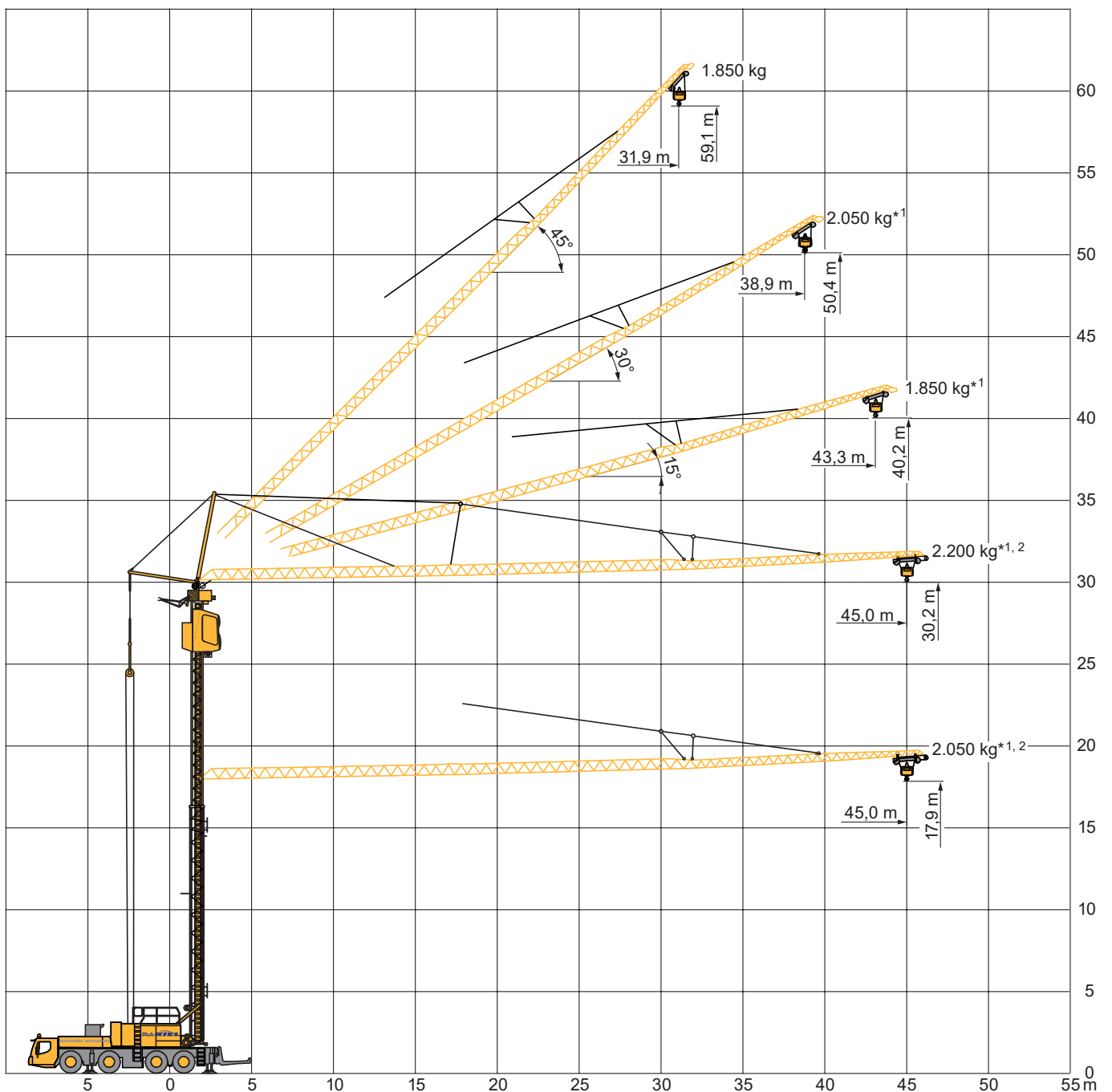
Tabelwaarden zijn exclusief hijsmiddelen.

The information contained in this document is for guidance only and may be subject to change.

© M.J. van Riel. All rights reserved.

Table values are without lifting equipment.

Werkbereik / Working ranges



MOBIELE TORENKRANEN

MOBILE TOWER CRANES

8 t

MK 88-4.1



45m





11,3t



7,3x7m





360°

	45					
	0°	0° PLUS*	15°	30°	45°	
3,3	8	8	1,85	6	1,85	3,3
10	8	8	1,85	6	1,85	10
12	8	8	1,85	6	1,85	12
14	6,91	7,51	1,85	5,05	1,85	14
16	6,08	6,67	1,85	4,56	1,85	16
18	5,41	5,99	1,85	4,15	1,85	18
20	4,87	5,42	1,85	3,81	1,85	20
22	4,42	4,93	1,85	3,51	1,85	22
24	4,05	4,52	1,85	3,25	1,85	24
26	3,73	4,16	1,85	3,03	1,85	26
28	3,45	3,84	1,85	2,83	1,85	28
30	3,2	3,56	1,85	2,65	1,85	30
32	2,99	3,32	1,85	2,49	1,85	32
34	2,8	3,1	1,85	2,35	1,85	34
36	2,63	2,9	1,85	2,22	1,85	36
38	2,48	2,72	1,85	2,05	1,85	38
40	2,34	2,55	1,85		1,85	40
42	2,22	2,4	1,85		1,85	42
44	2,1	2,26	1,85		1,85	44
45	2,05	2,2				45

max. 6,5 Bft

* Plus load curves with control limitations in comparison to standard load curve

	45					
	0°	15°	30°	45°		
3,3	8	1,85	6	1,85	3,3	
9	8	1,85	6	1,85	9	
10	8	1,85	5,62	1,85	10	
12	7,37	1,85	4,97	1,85	12	
14	6,36	1,85	4,45	1,85	14	
16	5,58	1,85	4,02	1,85	16	
18	4,96	1,85	3,66	1,85	18	
20	4,46	1,85	3,36	1,85	20	
22	4,05	1,85	3,1	1,85	22	
24	3,7	1,85	2,87	1,85	24	
26	3,4	1,85	2,67	1,85	26	
28	3,14	1,85	2,49	1,85	28	
30	2,92	1,85	2,34	1,6	30	
32	2,72	1,85	2,2	1,6	32	
34	2,54	1,85	2,07		34	
36	2,39	1,85	1,95		36	
38	2,25	1,6	1,8		38	
40	2,12	1,6			40	
42	2	1,6			42	
44	1,9	1,6			44	
45	1,85				45	

max. 7 Bft

MOBIELE TORENKRANEN

MOBILE TOWER CRANES

8 t

MK 88-4.1



45m





9,3t



7,3x7m





360°

	45					
	0°	0° PLUS*	15°	30°	45°	
3,3	8	8	1,85	6	1,85	3,3
10	8	8	1,85	6	1,85	10
12	7,37	8	1,85	5,26	1,85	12
14	6,36	7,15	1,85	4,69	1,85	14
16	5,58	6,24	1,85	4,22	1,85	16
18	4,97	5,53	1,85	3,83	1,85	18
20	4,46	4,96	1,85	3,5	1,85	20
22	4,05	4,48	1,85	3,22	1,85	22
24	3,7	4,09	1,85	2,98	1,85	24
26	3,4	3,75	1,85	2,77	1,85	26
28	3,14	3,45	1,85	2,58	1,85	28
30	2,92	3,2	1,85	2,41	1,85	30
32	2,72	2,98	1,85	2,26	1,85	32
34	2,54	2,78	1,85	2,13		34
36	2,39	2,6	1,85	2,01		36
38	2,25	2,45	1,85	1,85		38
40	2,12	2,3	1,85			40
42	2	2,17	1,85			42
44	1,9	2,06	1,85			44
45	1,85	2				45

max. 6,5 Bft

* Plus load curves with control limitations in comparison to standard load curve

	45				
	0°	15°	30°	45°	
3,3	8	1,85	6	1,85	3,3
8,5	8	1,85	6	1,85	8,5
10	8	1,85	5,2	1,85	10
12	6,76	1,85	4,58	1,85	12
14	5,85	1,85	4,08	1,85	14
16	5,14	1,85	3,67	1,85	16
18	4,57	1,85	3,34	1,85	18
20	4,11	1,85	3,05	1,85	20
22	3,73	1,85	2,8	1,85	22
24	3,41	1,85	2,59	1,85	24
26	3,13	1,85	2,41	1,85	26
28	2,9	1,85	2,24	1,85	28
30	2,69	1,85	2,1	1,6	30
32	2,51	1,85	1,97	1,6	32
34	2,34	1,85	1,85		34
36	2,2	1,85	1,74		36
38	2,07	1,85	1,6		38
40	1,95	1,6			40
42	1,84	1,6			42
44	1,75	1,6			44
45	1,7				45

max. 7 Bft

Opstel procedure / Erection Procedure

