

# MOBIELE TORENKRANEN MOBILE TOWER CRANES

6 t

MK 73-3.1



Gieklengte  
Mast length  
38,5m




Ballast  
Counterweight  
7,2t



Stempelbasis  
Outriggers  
6,61x7m

## Electrical power connection / Stroomaansluiting

		RCD	U	f	P
CEE 63 A	136 m - 5 x 16 mm <sup>2</sup>	Typ B / 300 mA	400 V	50 Hz	31 kVA
CEE 32 A	66 m - 5 x 6 mm <sup>2</sup>	Typ A / 30 mA	400 V	50 Hz	21 kVA

*This crane is 'plug in Electric' and can optionally run electrically. The crane is powered by a ECO-mode Diesel engine (Euro 6) as standard.*

*Deze kraan is optioneel 'plug in' elektrisch. Standaard zal de kraan aangedreven worden door een EURO 6 ECO-mode motor in de onderbouw.*

De informatie binnen dit document is enkel voor richtlijnen en kan onderhevig zijn aan veranderingen.

© M.J. van Riel. Alle rechten voorbehouden.

Tabelwaarden zijn exclusief hijsmiddelen.

The information contained in this document is for guidance only and may be subject to change.

© M.J. van Riel. All rights reserved.

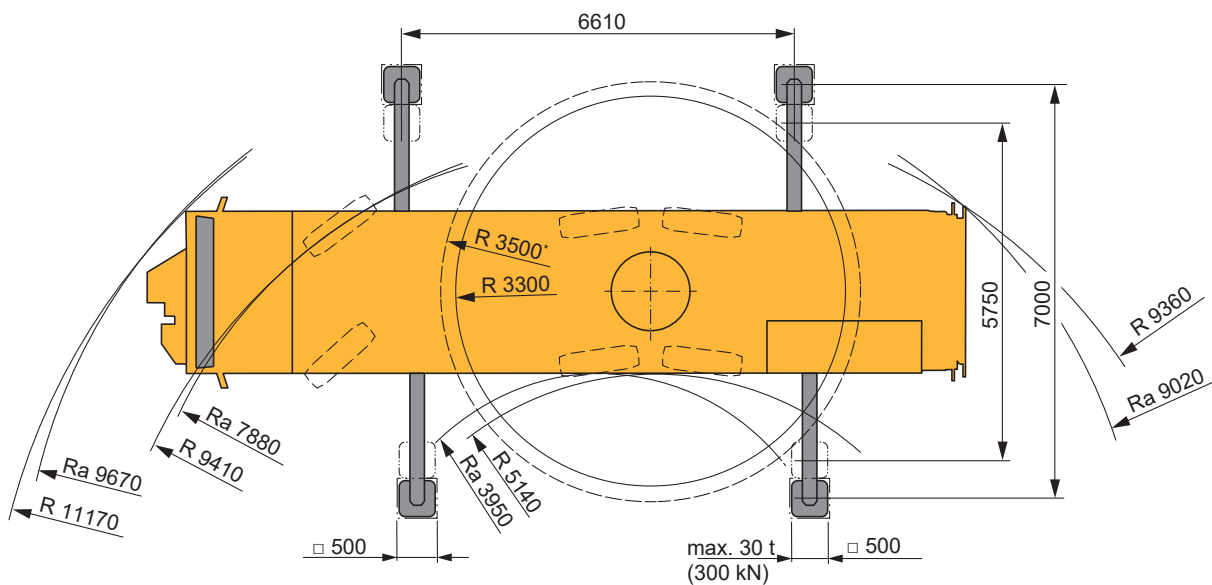
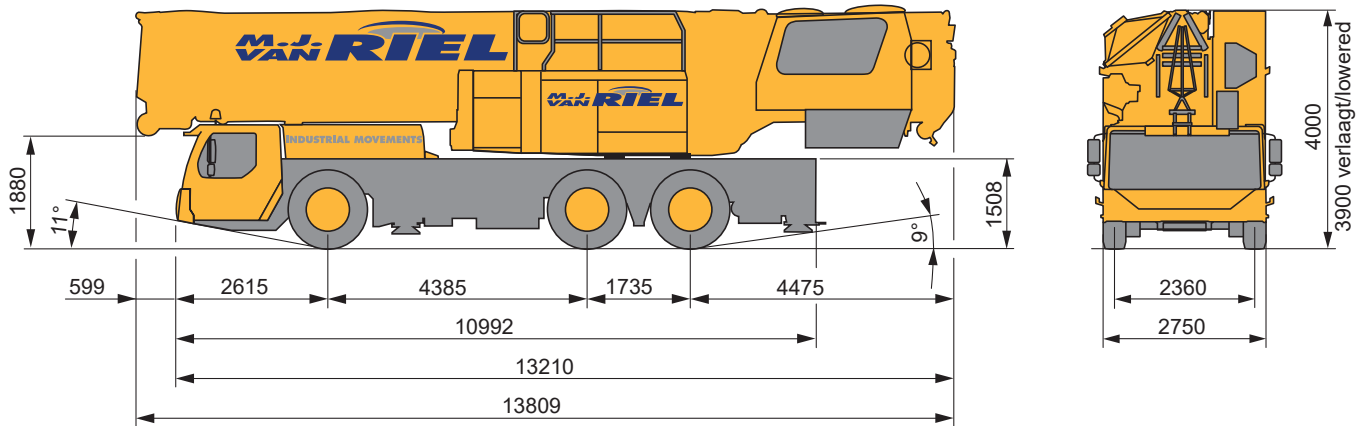
Table values are without lifting equipment.

# MOBIELE TORENKRANEN MOBILE TOWER CRANES

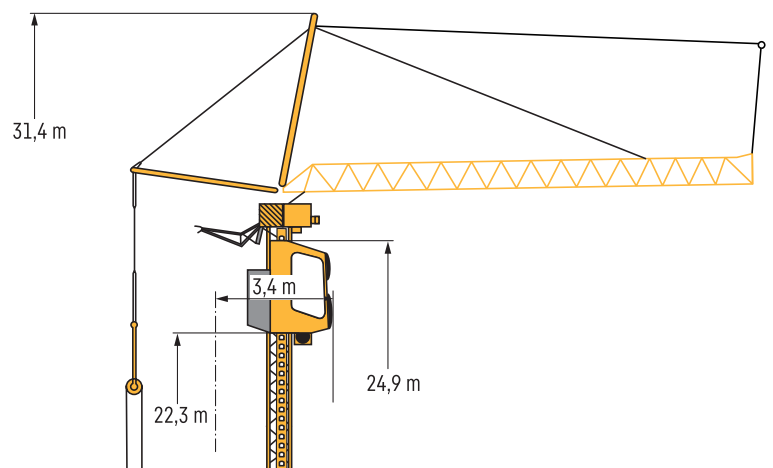
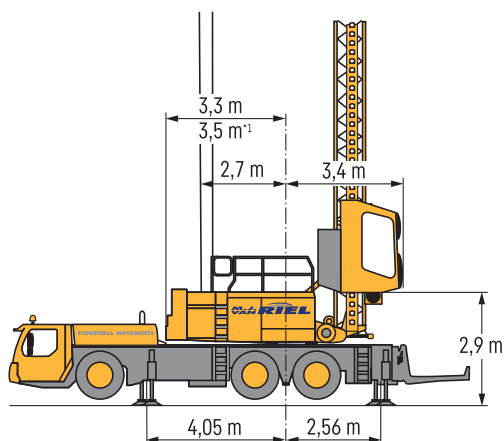
6 t

MK 73-3.1

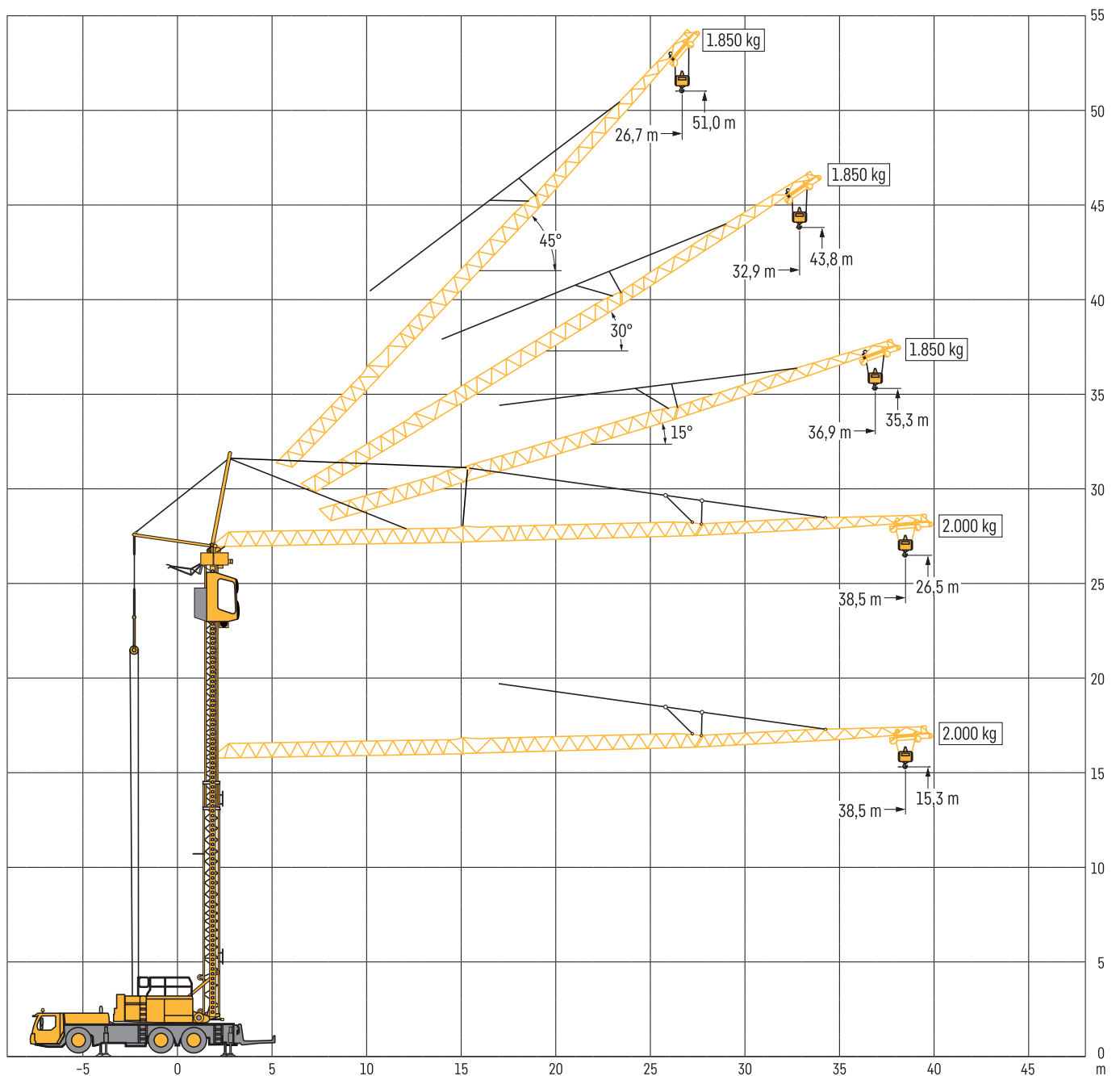
## Afmetingen / Dimensions



\* Met 2,9 t Ballast / with 2,9 t additional counterweight  
Ra = Alle wielen gestuurd  
All wheels steered



Werkbereik / Working ranges



# MOBIELE TORENKRANEN

## MOBILE TOWER CRANES

6 t

MK 73-3.1



38,5m





7,2t



6,61x7m



280°

	0°	0° PLUS*	15°	38,5 15° PLUS	30°	45°	45° PLUS	
2,7						1,85	2,8	2,7
3					6	1,85	2,8	3
3,2	6	6	1,85	2,6	6	1,85	2,8	3,2
12	6	6	1,85	2,6	5,5	1,85	2,8	12
14	5,37	5,79	1,85	2,6	4,71	1,85	2,8	14
16	4,71	5,07	1,85	2,6	4,1	1,85	2,8	16
18	4,18	4,5	1,85	2,6	3,63	1,85	2,8	18
20	3,75	4,04	1,85	2,6	3,25	1,85	2,8	20
22	3,4	3,66	1,85	2,6	2,93	1,85	2,47	22
24	3,1	3,35	1,85	2,6	2,67	1,85	2,21	24
26	2,85	3,07	1,85	2,6	2,44	1,85	1,98	26
28	2,63	2,84	1,85	2,43	2,25	1,85	1,85	28
30	2,44	2,64	1,85	2,28	2,08			30
32	2,28	2,46	1,85	2,14	1,94			32
34	2,13	2,3	1,85	2,02	1,85			34
36	2	2,16	1,85	1,91				36
38	1,88	2,03	1,85	1,85				38
38,5	1,85	2						38,5

max. 6,5 Beaufort

\* Plus load curves with control limitations in comparison to standard load curve.

# MOBIELE TORENKRANEN

## MOBILE TOWER CRANES

6 t

MK 73-3.1



38,5m





7,2t



6,61x7m



80°

	0°	0° PLUS*	15°	38,5 15° PLUS	30°	45°	45° PLUS	
2,7						1,85	2,8	2,7
3					6	1,85	2,8	3
3,2	6	6	1,85	2,6	6	1,85	2,8	3,2
12	6	6	1,85	2,6	5,47	1,85	2,8	12
14	5,04	5,5	1,85	2,6	4,63	1,85	2,8	14
16	4,33	4,7	1,85	2,6	4,01	1,85	2,8	16
18	3,79	4,09	1,85	2,6	3,52	1,85	2,8	18
20	3,36	3,61	1,85	2,6	3,14	1,85	2,8	20
22	3,01	3,23	1,85	2,6	2,82	1,85	2,47	22
24	2,72	2,92	1,85	2,59	2,56	1,85	2,21	24
26	2,48	2,65	1,85	2,36	2,33	1,85	1,98	26
28	2,27	2,43	1,85	2,17	2,14	1,85	1,85	28
30	2,1	2,24	1,85	2	1,98			30
32	1,94	2,07	1,85	1,85	1,83			32
34	1,8	1,92	1,72	1,72	1,75			34
36	1,68	1,79	1,61	1,61				36
38	1,58	1,68	1,55	1,55				38
38,5	1,55	1,65						38,5

max. 6,5 Beaufort

\* Plus load curves with control limitations in comparison to standard load curve.