

MOBIELE TORENKRANEN MOBILE TOWER CRANES

18 t

SK2400-AT7



Gieklengte
Mast length
42m



Ballast
Counterweight
23t



Stempelbasis
Outriggers
7,95x7,63m

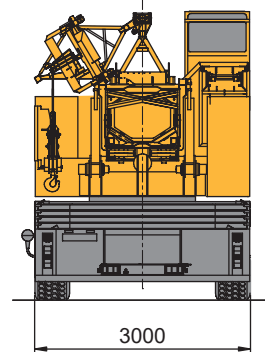
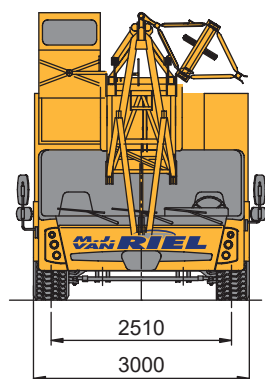
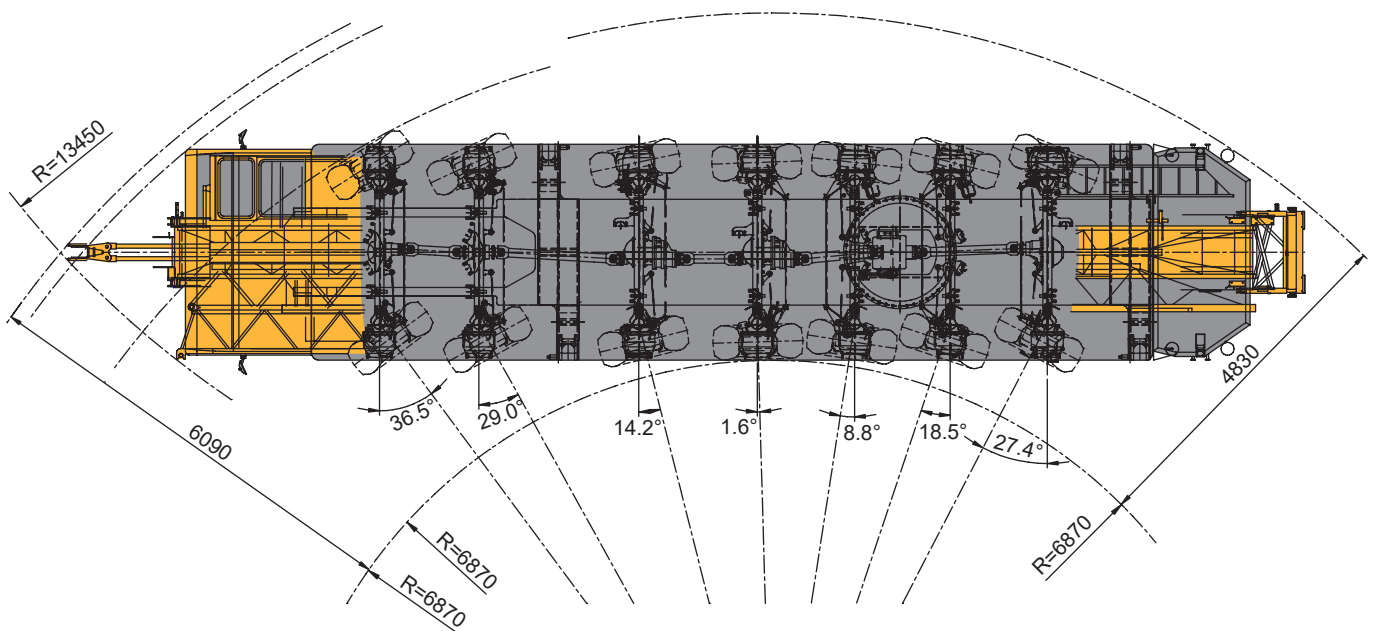
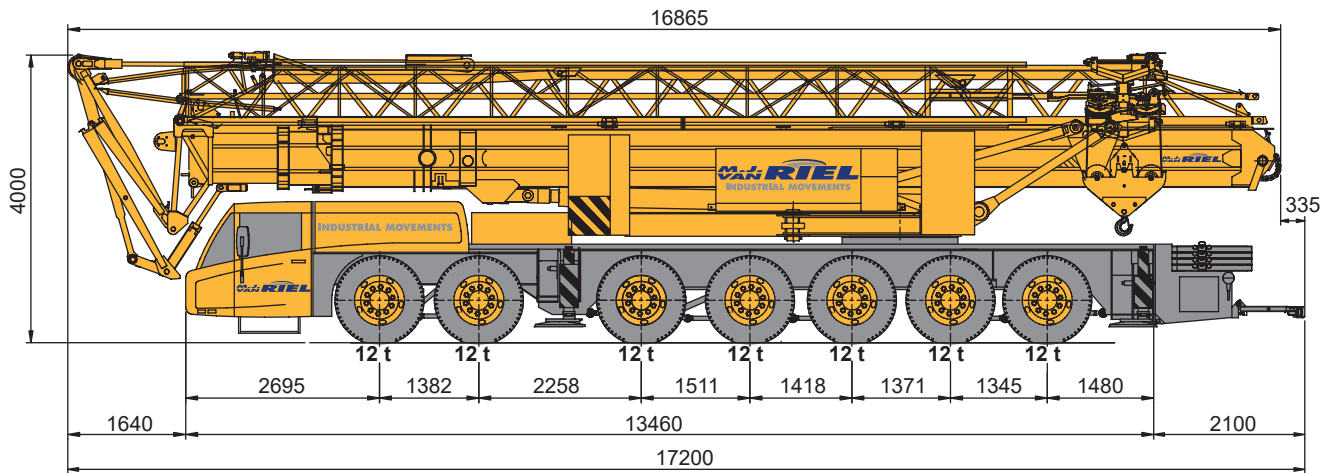
De informatie binnen dit document is enkel voor richtlijnen en kan onderhevig zijn aan veranderingen.
© M.J. van Riel. Alle rechten voorbehouden.

Tabelwaarden zijn exclusief hijsmiddelen.

The information contained in this document is for guidance only and may be subject to change.
© M.J. van Riel. All rights reserved.

Table values are without lifting equipment.

Afmetingen / Dimensions

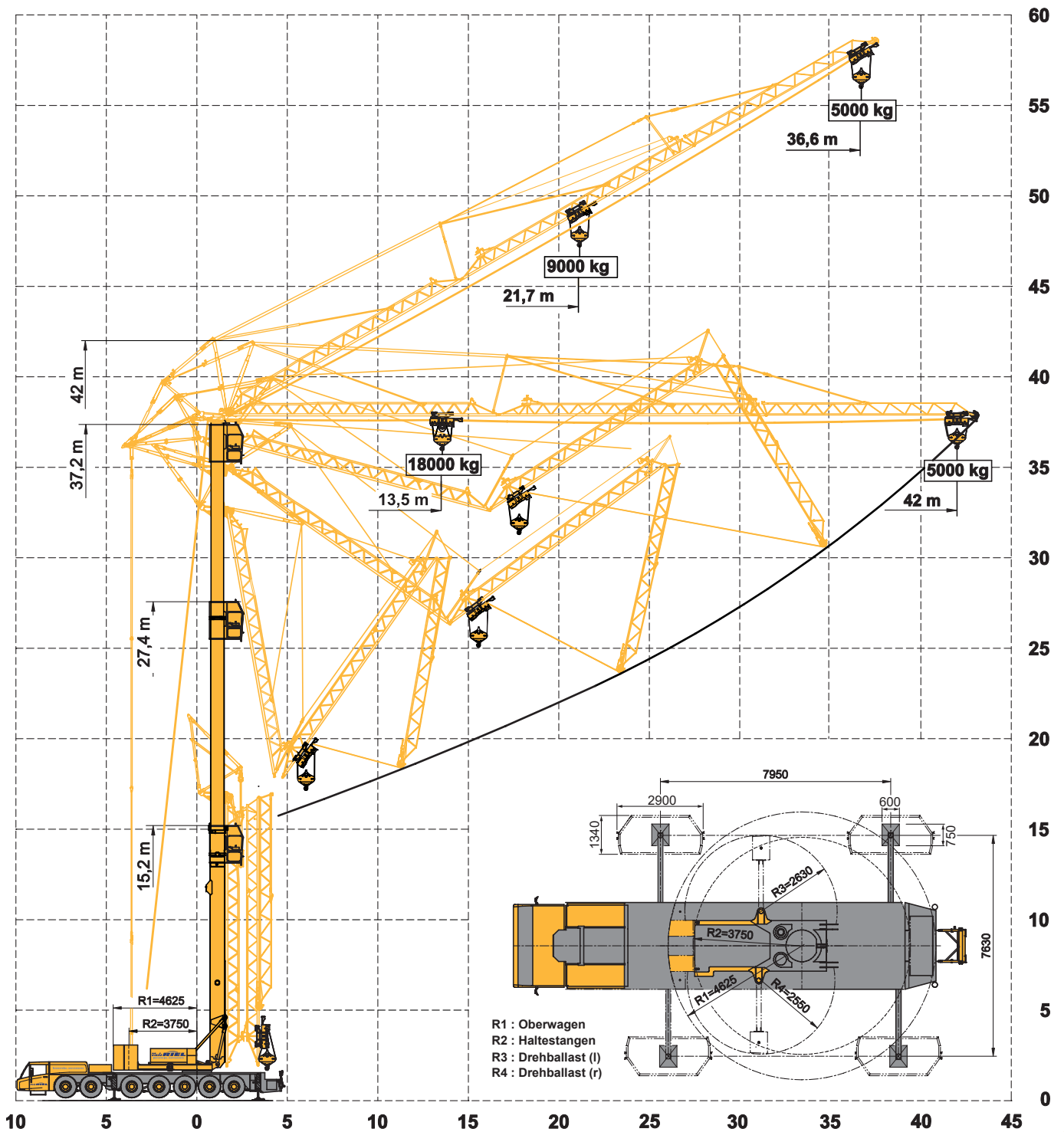


MOBIELE TORENKRANEN MOBILE TOWER CRANES

18 t

SK2400-AT7

Werkbereik / Working ranges





42m



23t



7,95x7,63m



360°

	42		42		
	0°/ LM1	0°/ LM2	30°/ LM1	30°/ LM2	
3,5	18	18	9	9	3,5
1	18	18	9	9	12,4
1	17,	18	9	9	13
1		18	9	9	13,5
1	15,925	17,25	9	9	14
1	14,785	15,925	9	9	15
1	13,8	14,785	9	9	16
1	12,930	13,8	9	9	17
1	12,160	12,93	9	9	18
	11,475	12,16	9	9	19
	10,860	11,475	9	9	19,8
21	*	10,86	8,45	9	21
2	10,310	10,31	8,015	9	21,7
2	9,805	9,805	7,62	8,44	22,7
2	*	9,35	7,26	8,045	24
2	9,350	9	6,935	7,685	24,8
2	9	8,55	6,63	7,35	26
2	*	8,195	6,355	7,045	27
2	8,550	7,87	6,1	6,765	28
2	8,195	7,565	5,86	6,5	29
	7,870	7,285	5,64	6,26	30
	7,565	7,025	5,435	6,03	31
3	7,285	6,78	5,24	5,82	32
3	7,025	6,55	5,06	5,62	33
3	6,780	6,335	4,895	5,435	34
3	6,550	6,135	4,735	5,26	35
3	6,335	5,945	4,585	5,095	36
3	6,135	5,765	4,5	5	36,6
3	5,945	5,595			38
3	*	5,435			39
	5,765	5,28			40
	5,595	5,135			41
	5,435	5			42

MOBIELE TORENKRANEN

MOBILE TOWER CRANES

18 t

SK2400-AT7



42m





23t



7,95x5,72m



360°

	42		42		
	0°/ LM1	0°/ LM2	30°/ LM1	30°/ LM2	
3,5	18	18	9	9	3,5
13,5	18	18	9	9	8,9
9,5	15,555	18	9	9	9,5
10	15,555	17,005	9	9	10
11	13,845	15,14	9	9	11
12	12,47	13,64	9	9	12
13	11,335	12,4	9	9	13
13,6	10,385	11,365	9	9	13,6
15	9,575	10,485	8,24	9	15
15,8	9	9,725	7,64	8,37	15,8
17	8,275	9	7,115	7,795	17
18	7,745	8,485	6,655	7,295	18
19	7,275	7,975	6,25	6,85	19
20	6,855	7,515	5,885	6,455	20
21	6,48	7,11	5,56	6,1	21
22	6,145	6,74	5,265	5,785	22
23	5,835	6,405	5	5,495	23
24	5,56	6,1	4,76	5,23	24
25	5,305	5,82	4,54	4,99	25
26	5,07	5,565	4,335	4,765	26
27	4,855	5,33	4,15	4,565	27
28	4,655	5,115	3,975	4,375	28
29	4,47	4,91	3,815	4,2	29
30	4,295	4,725	3,67	4,04	30
31	4,135	4,55	3,53	3,885	31
32	3,985	4,385	3,4	3,745	32
33	3,85	4,235	3,28	3,615	33
34	3,715	4,09	3,165	3,49	34
35	3,595	3,955	3,06	3,37	35
36	3,475	3,83	2,955	3,26	36
36,6	3,365	3,71	2,9	3,2	36,6
38	3,265	3,595			38
39	3,165	3,49			39
40	3,07	3,39			40
41	2,985	3,29			41
42	2,9	3,2			42